



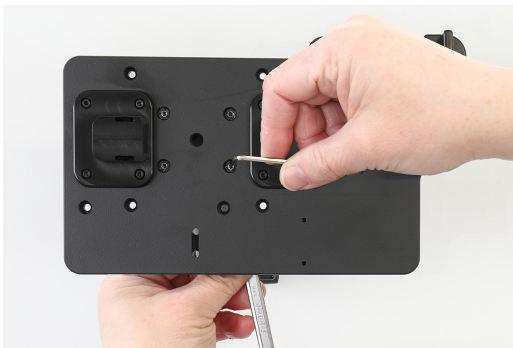
TELEPÍTÉS

ModTek kemény tok

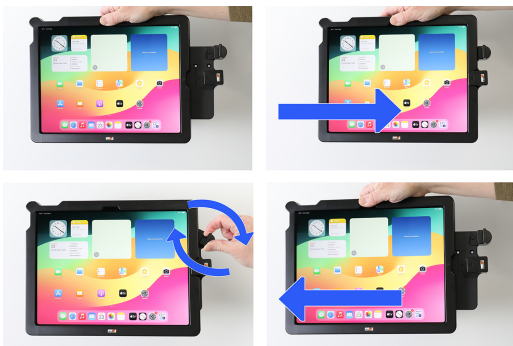


Please read all of the instructions and look at the pictures before attaching the holder.

1. Place the back plate facing upward and press the tablet into it. Press the three included pins into the frame. Press the frame down over the back plate. Turn the back plate over and screw in the four included screws.



2. Mounting the Dock: Place the Dock onto the desired position and screw into place with the enclosed screws. The two mount points are used to align the tablet with the USB-C connector to ensure a perfect alignment and ensure the USB-C connection to the tablet does not create excessive wear.



3. Docking a Hard Case: The Hard Case and the Dock include alignment indicators to show where they should line up. Place the Hard Case onto the dock so both mount points are engaged before attempting to slide the case onto the USB-C connector. NOTE: If only one mount point is engaged the angle will be off when connecting to the USB-C connector and you can damage it permanently. Once the Hard Case is aligned by engaging both mount points, smoothly slide the tablet onto the USB-C connector until you hear an audible click. If you feel significant resistance the case is not properly aligned. Remove it and ensure alignment on both mount points before continuing. Releasing a Hard Case from the Dock: Use the quick release dial by turning it clockwise similar to turning a key. Now grab the Hard Case and slide it until you see the alignment



line and then pull the case towards you.

4. The mount is in place.

Az alábbiakkal kompatibilis

- Apple iPad Air 13 2025 M3 (A3268, A3268, A2371)