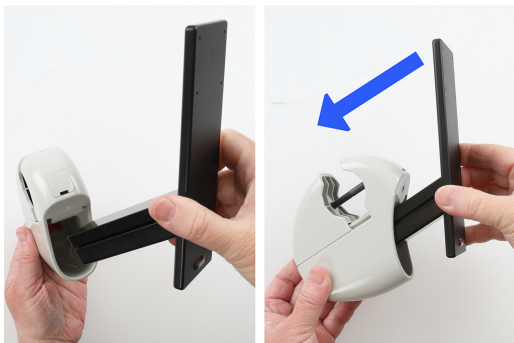




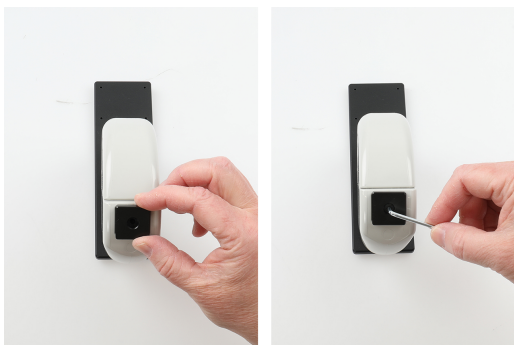
# TELEPÍTÉS

## Mount - Rögzítő



Please read all of the instructions and look at the pictures before attaching the product.

1. First, attach the Zebra mount to the shopping cart. Then place the Brodit mount into it as shown in the image.



2. Insert the locking plate into the hole underneath the mount. Secure it using the included screw.

3. The mount is now assembled with a Brodit holder attached.

4. The product is in place.

## Az alábbiakkal kompatibilis

