

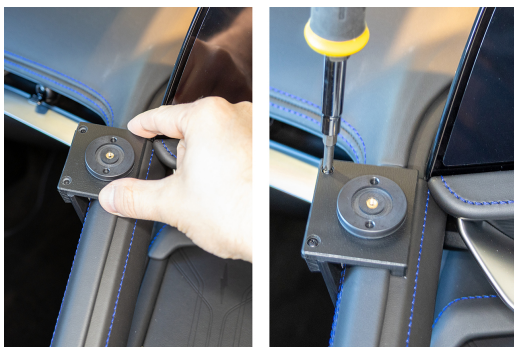


# TELEPÍTÉS

## ProClip



Please read all of the instructions and look at the pictures before attaching the ProClip mount. It is important to install the mount first: any device holder/equipment is to be attached after the mount is in place. This mount consists of three parts: A mount, a top part and a faceplate.



1. Locate the trim seam under the console rail. Gently work the lower edge of the mount into the seam. Slide the mount to the upper most position on the rail.



2. Rest the top mount of the mount against the raised edge of the rail trim. Align the screw holes of the upper and lower sections of the mount. Secure the upper and lower sections of the mount together with the included screws.

3. Place the included locking washer into the recess on top of the mount. Place the faceplate onto the mount. Adjust the faceplate into the desired angle. The faceplate may be installed for use by the driver or passenger. Attach the faceplate to the mount with the included screw.



4. The ProClip mount is firmly in place.

**Az alábbiakkal kompatibilis**

- Chevrolet Corvette (2025-2026)