

TELEPÍTÉS

Aktív tartó USB-kábelrel és szivargyújtó adapterrel

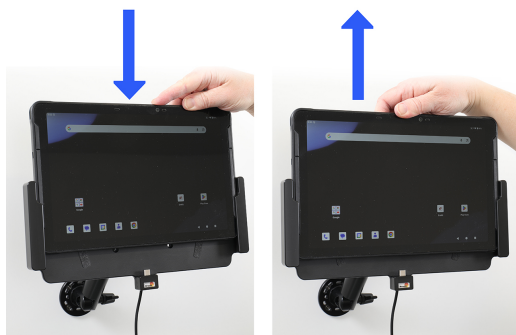
Please read all of the instructions and look at the pictures before attaching the holder.



1. Loosen the screw in the center of the holder so you can remove the tilt swivel attaching plate on the back.



2. Place the attaching plate onto the desired position. Screw the attaching plate into place with the enclosed screws. Place the holder over the attaching plate so the screw fits in the hole in the tilt swivel. Tighten the screw until the holder is firmly in place, but still can be adjusted.



3. To place the device in the holder: Place the device over the holder and slide it straight downward into the holder. To remove the device from the holder: Lift the device straight upward, out from the holder.

4. The holder is in place.

Az alábbiakkal kompatibilis

- Point Mobile TR54

